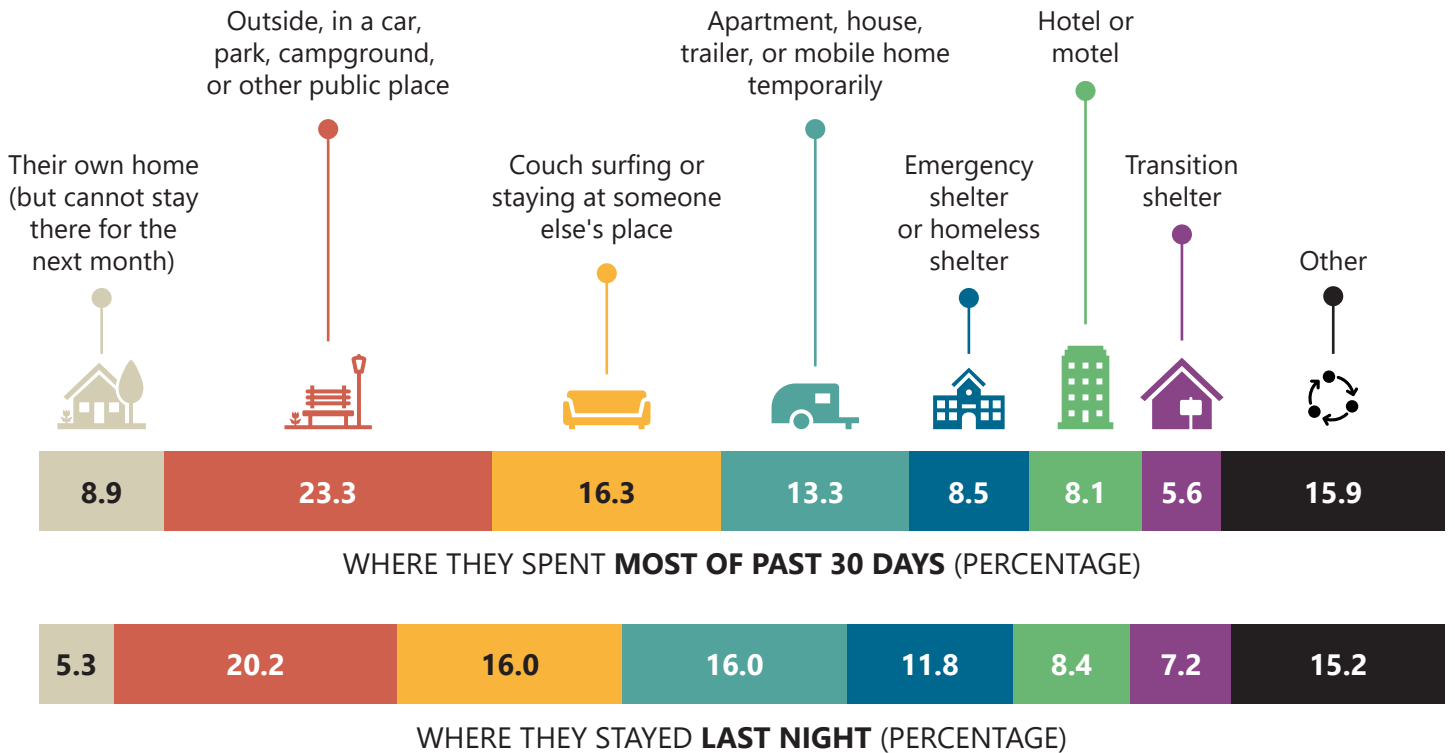




# 2021 Comprehensive Needs Assessment of Young People Experiencing Housing Instability and Homelessness in Bernalillo County, New Mexico

## Where Young People without Stable Housing Are Sleeping

(Findings from the New Mexico Youth Count and Housing Survey)



Between  
**1,088 to 2,314**  
young people  
aged 15-25  
are without  
stable housing

### Self-Reported Health of Young People who are Unstably Housed or Homeless

- 28.2%** Poor or fair general health
- 24.2%** Visited the emergency room three or more times in the past year
- 38.3%** Physical disability or long-term health condition
- 38.3%** Mental health NOT GOOD most of the time or always in the past 30 days